

Dear Parents,

May 2015



<b>Whole School Trip</b>	<b>20th May</b>
<b>Fundraising for Vranch House</b>	<b>20th June</b>
<b>Devon Parent Carer Voice</b>	<b>16th June</b>
<b>Free Training Course for Parent Carers</b>	<b>11th May</b>

### **Whole school trip**

This term we are learning about knights, kings and castles. Our main focus is Queen Victoria. And of course Princess Charlotte who was born at the right time for our topic. Thank you Princess Charlotte Elizabeth Diana 😊

To link with our topic we will be visiting Powderham Castle on Wednesday, 20<sup>th</sup> May. Transporting the whole school without the fantastic help from parents would be logistically rather difficult. We appreciate your help to make this trip happen!

Children arriving to school on transport will be travelling on hired buses to the castle, arriving around 10.15.

Children who are coming from home with parents, please meet us by the castle's main entrance at 10.15. The car park is a couple of minutes walk away. Please see enclosed map.

We will be entering the castle through a wheelchair accessible side entrance and a guide will be waiting to take us on a tour around the ground floor, which will last approximately 45 minutes. Unfortunately the upstairs is not accessible but I am certain that we will have plenty of opportunity to experience how it may feel to be living in a castle, if only for a short while.

Most of the garden of the immediate castle is wheelchair accessible and offers fantastic views to the estuary and the hundreds of deer.

For lunchtime we will have a separate room for us in the servants' quarters. **Please bring/send in a packed lunch for your child and also for yourself if you are joining us on the trip.**

Toileting will need a little bit of creativity. There is a disabled toilet and we will be taking a mat and blankets with us should anyone need to use this facility.

After lunch we will walk to the Walled Gardens to see the animals.

The hired bus needs to be back at Vranch House by 2.30pm but those families who drove there are, of course, welcome to stay as long as they like.

To enhance the experience, I call upon all children, families and staff to dress accordingly -- put on a full armour, arrive on a horse, be the most beautiful princess or the bravest knight!

## **Fundraising for Vbranch House**

Andy Newberry (Reuben's father) and a close friend of the family, Daniel Hammond, have booked themselves on the Tandem Sky Dive Guinness World Record attempt at Dunkeswell airfield on 20th June 2015. They are going to donate 100% of their sponsor money to Vbranch House. Thank you Andy and Dan!

If you wish to support Andy, he has his own fundraising page:

<https://mydonate.bt.com/fundraisers/andynewberry>

## **Devon Parent Carer Voice**

Devon Parent Carer Voice annual meeting will be held in Buckfast on 16<sup>th</sup> June 2015. For further information and for a booking form please see:

<https://www.devonparentcarersvoice.org/events/book>

## **Free Training Course for Parent Carers**

There is opportunity for a free training course run by Face 2 Face - a peer-support group "Parents supporting Parents of disabled Children".

'The training will help you develop a deeper understanding of the emotions you faced when discovering your child had additional needs and the impact it has had on your life. You will feel less isolated as you meet others who understand, feel more confident in your own skills and abilities and have improved self-esteem. Being part of Face 2 Face means you will benefit from the emotional and practical support of other parents and also be able to use your own experiences to offer support.'

Where? Clyst Vale Children's Centre, Clyst St Mary

When? All on the following: Mondays 09:30-14:30

May – 11<sup>th</sup>, 18<sup>th</sup>.     June – 1<sup>st</sup>, 8<sup>th</sup>, 15<sup>th</sup>, 22<sup>nd</sup>, 29<sup>th</sup>.     July – 6<sup>th</sup>

Please contact Bel McDonald (Face2Face Coordinator, Exeter and East Devon) if you are interested. 07825 739171; email: [bel@face2face-exeter.org.uk](mailto:bel@face2face-exeter.org.uk)

## **Circus Starr Tickets**

We still have some free tickets available for the Circus Starr visit to Exeter on Thursday, 4th June - please contact Beverley if you would like some tickets for either the 4.45pm or 7pm performances.

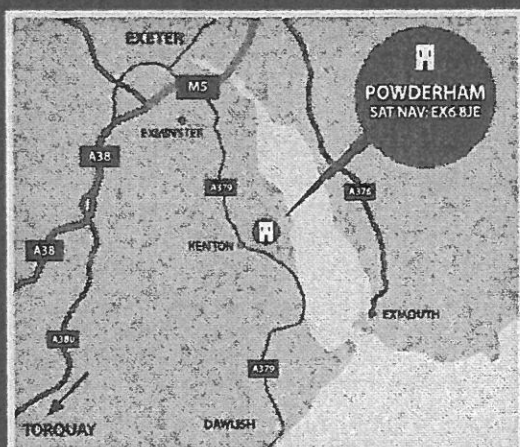
If you have any questions regarding the school trip or other school matters, please do not hesitate to contact me on 01392 468333 or [education@vbranchhouse.org](mailto:education@vbranchhouse.org)

Viktoria Pavlics  
Head Teacher

## DIRECTIONS & CONTACT DETAILS

**From the North:** Leave the M5 at Junction 30 (Sandycroft) and proceed towards Exeter joining the A379 in a southerly direction. Continue over the Courtney Way roundabout. Take the first exit left on the A379, signposted to Dawlish, then follow Powderham Castle brown tourist signs. The Castle entrance is on the left hand side as you leave the village of Kenton.

**From the South:** Leave the A38 at the Wobbling Wheel Junction and merge onto the A379 (signposted Dawlish). At the Marsh Barton Roundabout take the 3rd exit onto the A379 then at the Matford Roundabout take the 2nd exit onto the A379 and follow the signs as above.



### Powderham Castle

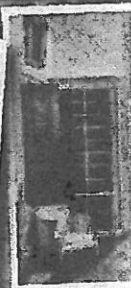
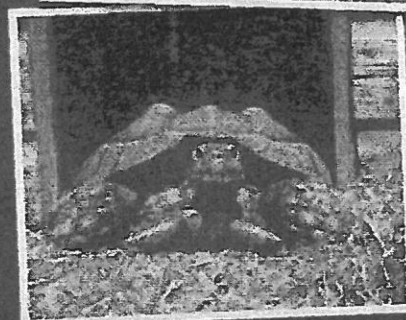
Kenton, Exeter, Devon EX6 8JQ

Contact us on 01626 890243

Monday to Friday 9.00am – 5.00pm

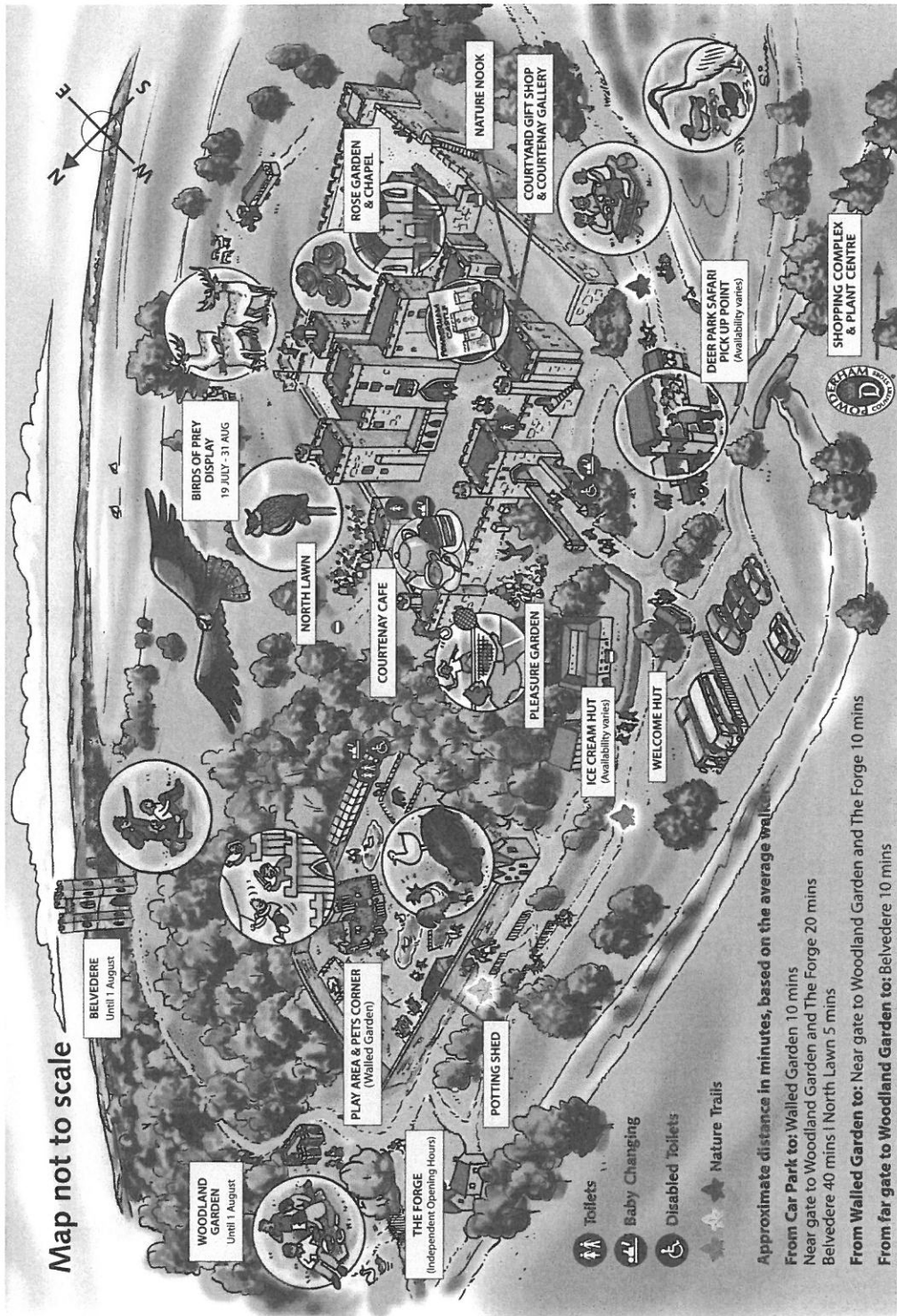
or email [groups@powderham.co.uk](mailto:groups@powderham.co.uk)

[www.powderham.co.uk](http://www.powderham.co.uk)



[www.powderham.co.uk](http://www.powderham.co.uk)

Map not to scale



Approximate distance in minutes, based on the average walker

From Car Park to: Walled Garden 10 mins

Near gate to Woodland Garden and The Forge 20 mins

Belvedere 40 mins | North Lawn 5 mins

From Walled Garden to: Near gate to Woodland Garden and The Forge 10 mins

From far gate to Woodland Garden to: Belvedere 10 mins

Toilets

Baby Changing

Disabled Toilets

Nature Trails