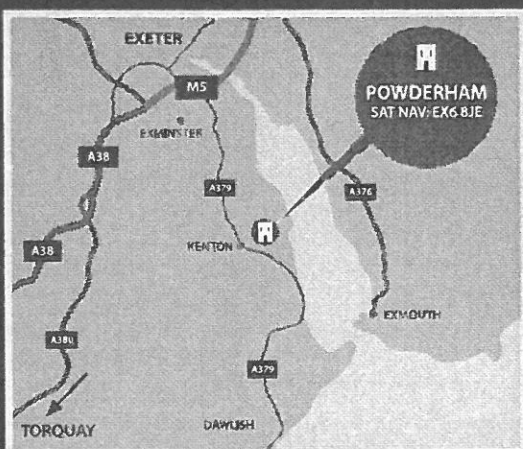


DIRECTIONS & CONTACT DETAILS

From the North: Leave the M5 at Junction 30 (Sandygate) and proceed towards Exeter joining the A379 in a southerly direction. Continue over the Countess Wear roundabout. Take the first exit left on the A379, signposted to Dawlish, then follow Powderham Castle brown tourist signs. The Castle entrance is on the left hand side as you leave the village of Kenton.

From the South: Leave the A38 at the 'Wobbly Wheel Junction' and merge onto the A379 (signposted Dawlish). At the Marsh Barton Roundabout take the 3rd exit onto the A379 then at the Matford Roundabout take the 2nd exit onto the A379 and follow the signs as above.



Powderham Castle

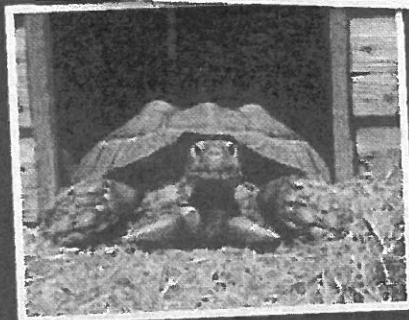
Kenton, Exeter, Devon EX6 8JQ

Contact us on 01626 890243

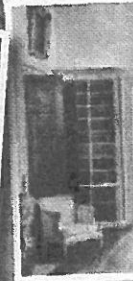
Monday to Friday 9.00am – 5.00pm

or email groups@powderham.co.uk

www.powderham.co.uk



POWDERHAM
CASTLE, GARDENS & GROUNDS



www.powderham.co.uk